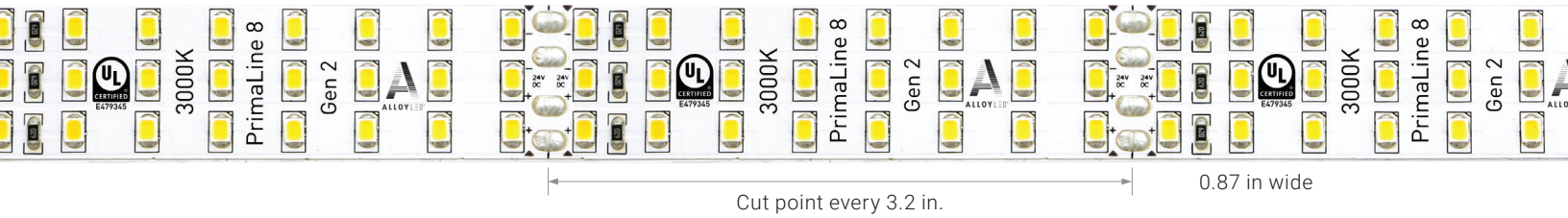


PrimaLine® 8 Gen 2 LED Tape Light



The PrimaLine Gen 2 family represents the next generation of LED lighting. Using the new, high-efficiency 2835 diode package, PrimaLine 8 Gen 2 offers light output of over 1,000 lumens per foot, making it ideal for primary and large application accent lighting. PrimaLine 8 makes installation quick and simple, with an 8 foot length that is easy to install in a 4 or 8 foot aluminum channel. Its evenly spaced dense diode placement minimizes hotspots to provide a smooth, even line of light.

- Next generation 2835 chips provide efficient lighting
- Up to 138 lumens per watt
- Perfect for use with Suspan™ channel to create a 4 ft. or 8 ft. suspended fixture
- Industry-leading 95+ CRI (Color Rendering Index)
- High R9 and R13 values for superb rendering of warm tones

TECHNICAL INFORMATION

Stocked CCTs (Kelvin Temp.)*	2700K, 3000K, 4200K, 5000K*
Power Consumption per ft.	7.9 Watts/360mA
Input Voltage	24V DC
Diodes per foot	96
Diode Spacing	0.41 inches
Tape Height	0.07 inches
Beam Angle	120°
Field Cuttable (UL 2108)	Every 3.2 inches
Max Run Length	20 ft.
Dimmable	Yes

Diode Type	2835 SMD
Mounting	3M™ Self-Adhesive Tape (Non-porous)
Operating Temp.	-13° F to 140° F
Ambient Temp.	-40° F to 186° F
Environment	Indoor, Dry
Spool Lengths	8 ft.**
Certifications	UL Listed, UL 2108, CE, RoHS
Standards	Certified to the CA Energy Commission in accordance with the Title 24 JA8 2016 std.
Warranty	6 Year Limited

* In addition to stocked colors, a wide variety of kelvin temperatures is also available by special order. Please call or email to order.

**Each spool comes with 8 ft. CL2 rated 20 AWG tinned lead wires at each end.

PRODUCT INFORMATION

8 ft. spool Item #	Voltage	Kelvin temp. (CCT) *	CRI	R9 Values	R13 Values	TM30	CQS	Lumens / foot
AL-01-20-2401	24V DC	● 2700K	97.3	95.4	97.6	93.3	94.9	820
AL-01-20-2402	24V DC	● 3000K	96.6	98.5	96.1	93.4	96.1	810
AL-01-20-2403	24V DC	○ 4200K	97.4	95.2	99.4	91.2	95	987
AL-01-20-2404	24V DC	● 5000K	93.9	80.1	96.1	87.4	90.8	1106

VOLTAGE DROP GUIDANCE CHART

Standard Non-XT 24V Voltage Drop & Wire Length Distance Chart (3% Drop or 24V)*

Wire Gauge	Copper Wire Resistance (Ω/kFT)	10W (0.42A)	20W (0.83A)	30W (1.25A)	40W (1.67A)	50W (2.08A)	60W (2.50A)	70W (2.92A)	80W (3.33A)	90W (3.75A)	96W (4A)
22 AWG	16.14	54 ft.	27 ft.	18 ft.	14 ft.	11 ft.	9 ft.	8 ft.	7 ft.	6 ft.	6 ft.
20 AWG	10.15	86 ft.	43 ft.	29 ft.	22 ft.	18 ft.	15 ft.	13 ft.	11 ft.	10 ft.	9 ft.
18 AWG	6.39	136 ft.	68 ft.	46 ft.	34 ft.	28 ft.	23 ft.	20 ft.	17 ft.	16 ft.	15 ft.
16 AWG	4.02	216 ft.	108 ft.	72 ft.	54 ft.	44 ft.	36 ft.	31 ft.	27 ft.	24 ft.	23 ft.
14 AWG	2.53	343 ft.	172 ft.	115 ft.	86 ft.	69 ft.	58 ft.	49 ft.	43 ft.	39 ft.	36 ft.
12 AWG	1.59	545 ft.	273 ft.	182 ft.	137 ft.	109 ft.	91 ft.	78 ft.	69 ft.	61 ft.	57 ft.
10 AWG	0.99	865 ft.	433 ft.	289 ft.	217 ft.	173 ft.	145 ft.	124 ft.	109 ft.	97 ft.	91 ft.

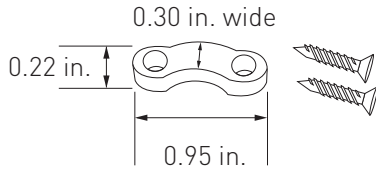
Note: These tables provide general guidelines for determining Wire Gauge based on total load and distance from LED driver to beginning of luminaire.

ACCESSORIES (SOLD SEPARATELY)

Wire and Tape Light Management

We recommend the use of the wire and tape harness.

- At least 1 wire harness at the beginning to secure the lead wire; for longer lead wires, place a harness every 2 feet
- 1 tape harness every 2 feet and 1 harness at the end of the tape light to secure it



Wire Harness

Holds wire in place securely
AL-01-99-9901-10 (10 pack)

COMPATIBLE CHANNELS (Diagrams below not to scale)

Reduced Hotspot Pairings (Hotspot Rating from 0-5)

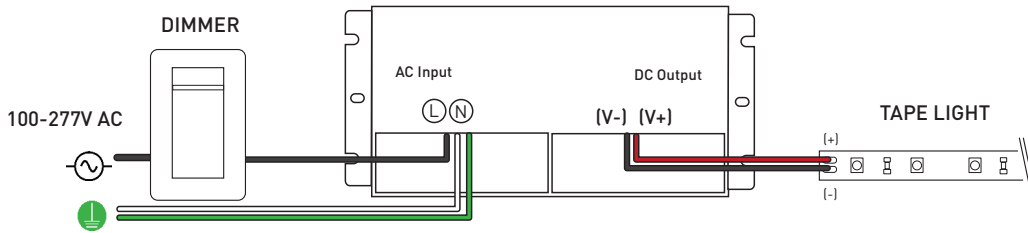
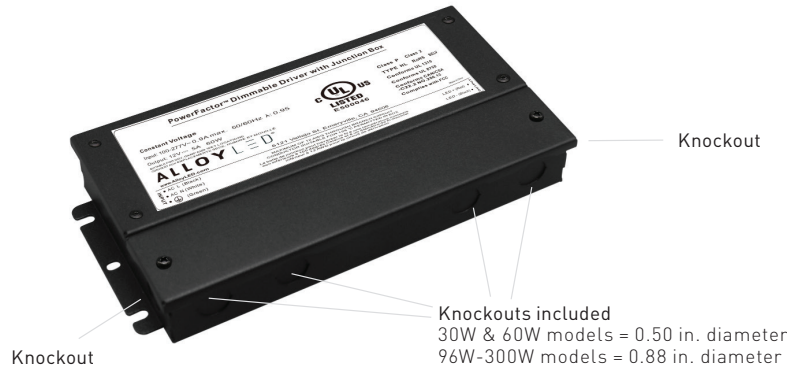
<p>Surfa 2X: Corner-Mount</p> <p>Hotspot Rating: 0</p> <ul style="list-style-type: none"> <input checked="" type="checkbox"/> Solder <input checked="" type="checkbox"/> Connector <input type="checkbox"/> Amp Champ 	<p>Suspan 1: Suspended</p> <p>Hotspot Rating: 0</p> <ul style="list-style-type: none"> <input checked="" type="checkbox"/> Solder <input checked="" type="checkbox"/> Connector <input type="checkbox"/> Amp Champ 	<p>Ankr 1: In-Wall</p> <p>Hotspot Rating: 0</p> <ul style="list-style-type: none"> <input checked="" type="checkbox"/> Solder <input checked="" type="checkbox"/> Connector <input type="checkbox"/> Amp Champ
<p>Ankr 2: In-Wall</p> <p>Hotspot Rating: 0</p> <ul style="list-style-type: none"> <input checked="" type="checkbox"/> Solder <input checked="" type="checkbox"/> Connector <input type="checkbox"/> Amp Champ 		

ALLOY LED[®] Specifications

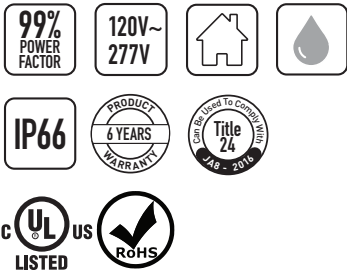
RECOMMENDED POWER SUPPLIES (SOLD SEPARATELY)



Alloy LED PowerFactor™ Dimmable Power Supplies w/ Integrated UL Listed Junction Box
Compact, highly efficient, and code-compliant power supply with versatile and smooth dimming capabilities.



Wiring diagram is for reference ONLY. Please refer to dimmer wiring specifications sheet for accurate directions.



Single Tap Models

Item #	Output Voltage	Wattage	Wet Location	Minimum Load	Dimensions (L x W x H)	Class 2
AL-98-10-12030	12V DC	30W	N	10%	6.50 x 3.72 x 1.02 in.	Y
AL-98-10-12060	12V DC	60W	N	10%	7.40 x 3.72 x 1.02 in.	Y
AL-98-10-12120	12V DC	120W	Y (IP66)	10%	8.66 x 3.72 x 1.57 in.	N
AL-98-10-24030	24V DC	30W	N	10%	6.50 x 3.72 x 1.02 in.	Y
AL-98-10-24060	24V DC	60W	N	10%	7.40 x 3.72 x 1.02 in.	Y
AL-98-10-24096	24V DC	96W	Y (IP66)	10%	8.66 x 3.72 x 1.57 in.	Y
AL-98-10-24150	24V DC	150W	Y (IP66)	10%	10.24 x 4.13 x 1.77 in.	N
AL-98-10-24200	24V DC	200W	Y (IP66)	10%	10.24 x 4.13 x 1.77 in.	N
AL-98-10-24300	24V DC	300W	Y (IP66)	10%	10.94 x 4.33 x 1.77 in.	N

Class 2 Compliant Multi-Tap Models

Item #	Output Voltage	Wattage	Wet Location	Minimum Load	Dimensions (L x W x H)	Class 2
AL-98-10-12300-MT	12V DC	300W	Y (IP66)	10%	11.85 x 4.33 x 1.77 in.	Y
AL-98-10-24192-MT	24V DC	192W	Y (IP66)	10%	10.94 x 4.33 x 1.77 in.	Y
AL-98-10-24288-MT	24V DC	288W	Y (IP66)	10%	10.85 x 4.33 x 1.77 in.	Y

Note: PowerFactor assumes 80% load.

Inspectors prefer power supply to be used with junction box.
For dimmer compatibility, refer to drivers specification sheet.

ALLOY LED® Specifications

RECOMMENDED POWER SUPPLIES (SOLD SEPARATELY)

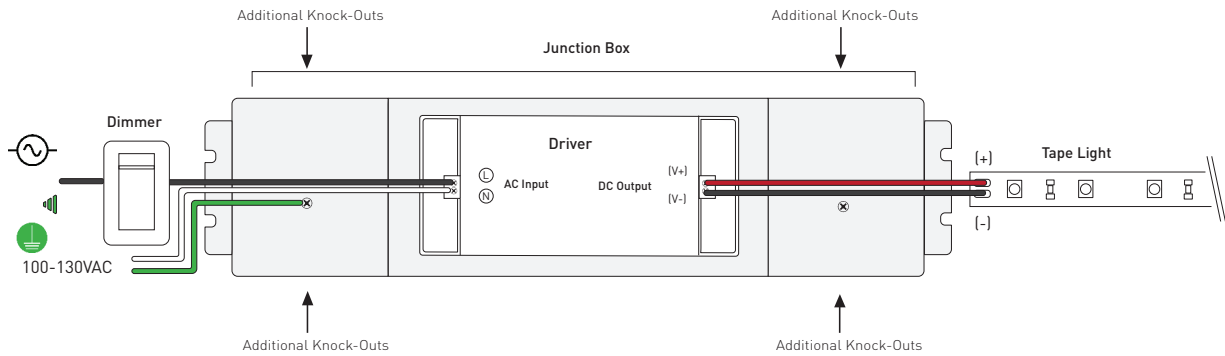
Alloy LED Primavolt® No Minimum Load Dimmable Power Supplies w/ETL Listed Junction Box
Code-compliant power supply with versatile and smooth dimming capabilities. Compatible with ELV, MLV, and TRIAC dimmers.



White model for 60W and lower



Black model for 80W and higher



Wiring diagram is for reference ONLY. Please refer to dimmer wiring specifications sheet for accurate directions.



Item #	Output Voltage	Wattage	Dry/ Damp Location	Min. Load	Dimensions (Junction box) (L x W x H)	Class 2
AL-98-03-12024-NM	12V DC	24W	Y	0%	13.77 x 3.03 x 1.45 in.	Y
AL-98-03-12048-NM	12V DC	48W	Y	0%	13.77 x 3.03 x 1.45 in.	Y
AL-98-03-12060-NM	12V DC	60W	Y	0%	13.77 x 3.03 x 1.45 in.	Y
AL-98-03-12080-NM	12V DC	80W	Y	0%	14.96 x 3.03 x 2.24 in.	N
AL-98-03-12120-NM	12V DC	120W	Y	0%	14.96 x 3.03 x 2.24 in.	N
AL-98-03-24024-NM	24V DC	24W	Y	0%	13.77 x 3.03 x 1.45 in.	Y
AL-98-03-24048-NM	24V DC	48W	Y	0%	13.77 x 3.03 x 1.45 in.	Y
AL-98-03-24060-NM	24V DC	60W	Y	0%	13.77 x 3.03 x 1.45 in.	Y
AL-98-03-24080-NM	24V DC	80W	Y	0%	14.96 x 3.03 x 2.24 in.	Y
AL-98-03-24096-NM	24V DC	96W	Y	0%	14.96 x 3.03 x 2.24 in.	Y
AL-98-03-24150-NM	24V DC	150W	Y	0%	15.98 x 3.42 x 2.36 in.	N
AL-98-03-24200-NM	24V DC	200W	Y	0%	15.98 x 3.42 x 2.36 in.	N

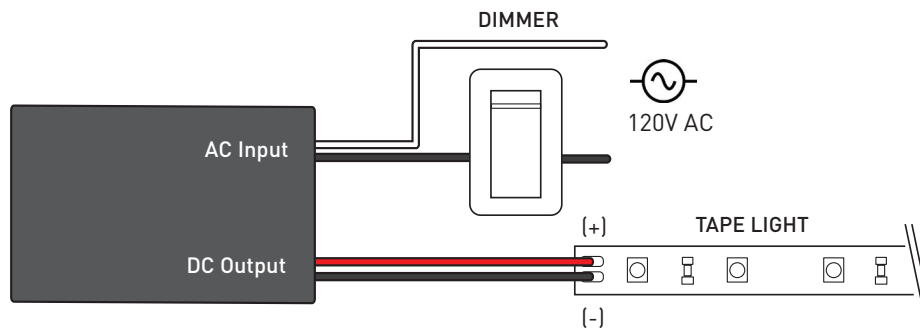
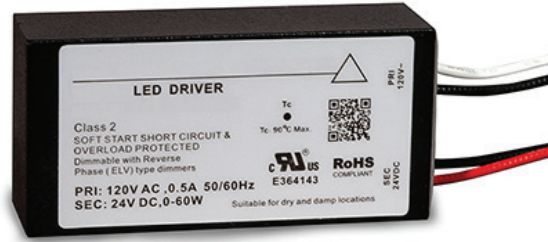
Note: Alloy LED strongly recommends using Listed Class 2 power supplies for all installations. Always install in accordance with local and national electrical code regulations. Inspectors prefer power supply to be used with junction box. For dimmer compatibility, refer to drivers specification sheet.

ALLOY LED® Specifications

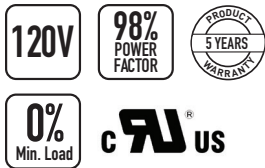
RECOMMENDED POWER SUPPLIES (SOLD SEPARATELY)

ELV Dimmable Power Supplies for Remote Enclosures

The drivers are derated, but when installed in a small enclosure with no heatsink or air circulation, we recommend a max. load of 40W.



Wiring diagram is for reference ONLY. Please refer to dimmer wiring specifications sheet for accurate directions.



Item #	Output	Wattage	Dimensions (L x W x H)	Class 2
AL-98-08-12060	12V DC	60W	2.66 x 1.30 x 0.83 in.	Y
AL-98-08-24060	24V DC	60W	2.66 x 1.30 x 0.83 in.	Y

Note: Inspectors prefer power supply to be used with junction box.
For dimmer compatibility, refer to drivers specification sheet.

ALLOY LED® Specifications

DIMMING ACCESSORIES (SOLD SEPARATELY)

Lutron® Dimming Accessories

By participating in Lutron's OEM Advantage program, Alloy LED is able to offer a range of the highest quality low voltage power supplies and selected controls on the market.



Hi-lume Premier
0.1% EcoSystem /
3-wire LED Driver
(96W 24VDC)



Hi-lume 1% LED Driver 40W
- EcoSystem / 3-wire control
- 2-wire 120V forward
phase control



Lutron Vive PowPak RF Module
- RF module for EcoSystem LED
driver control
- Use with the Lutron EcoSystem
drivers shown to "Vive-enable"
Alloy LED products

Lutron® Hi-lume LED Drivers

Item #	Output	Wattage	Min. Load	Class 2
AL-98-07-12040	12V DC	40W	n/a	Y
AL-98-07-12040-3WIRE	12V DC	40W	n/a	Y
AL-98-07-24040	24V DC	40W	n/a	Y
AL-98-07-24040-3WIRE	24V DC	40W	n/a	Y
AL-98-07-24096-3WIRE	24V DC	96W	n/a	Y

Lutron® Controls

Item #	Description	Voltage
AL-98-07-9901	EcoSystem Control Module	n/a
AL-98-07-9901-8	EcoSystem Control Module - 8 pack	n/a
AL-98-07-9950	CL Dimmer	120V AC
AL-98-07-9950-FPLATE	CL Dimmer faceplate	n/a

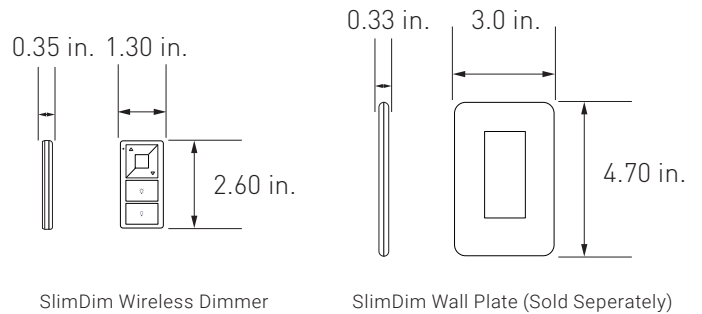
DIMMING ACCESSORIES (SOLD SEPARATELY)

Dimmers & Switches

SlimDim Wireless Dimmers

Using long-range RF technology, these LED dimmers connect wirelessly to a receiver, offering freedom to mount anywhere. Can also be used as a fob for mobile, hand-held control.

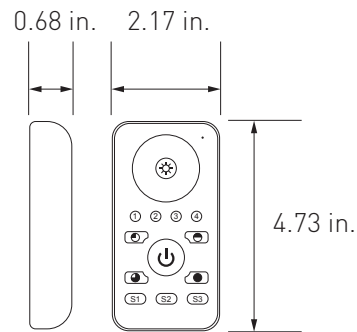
AL-70-01-0001	SlimDim Wireless Dimmer
AL-70-01-0002	Single Color Receiver (96W max.) (sold separately)
AL-98-07-9950-FPLATE	SlimDim Wall Plate (sold separately)



Remote Control Dimmer Switch

Provides full dimming and on/off control, and includes a touch wheel that allows for direct visual selection of brightness. It can also operate up to four independent zones.

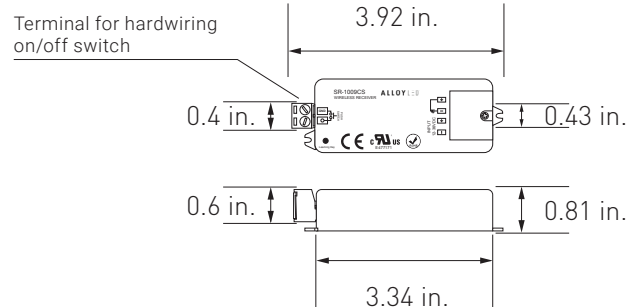
AL-60-03-0001	Remote Control Dimmer Switch
AL-70-01-0002	Single Channel Receiver (sold separately)
AL-60-03-0004-V2	Wireless Receiver (RGB & RGB-W) (sold separately)



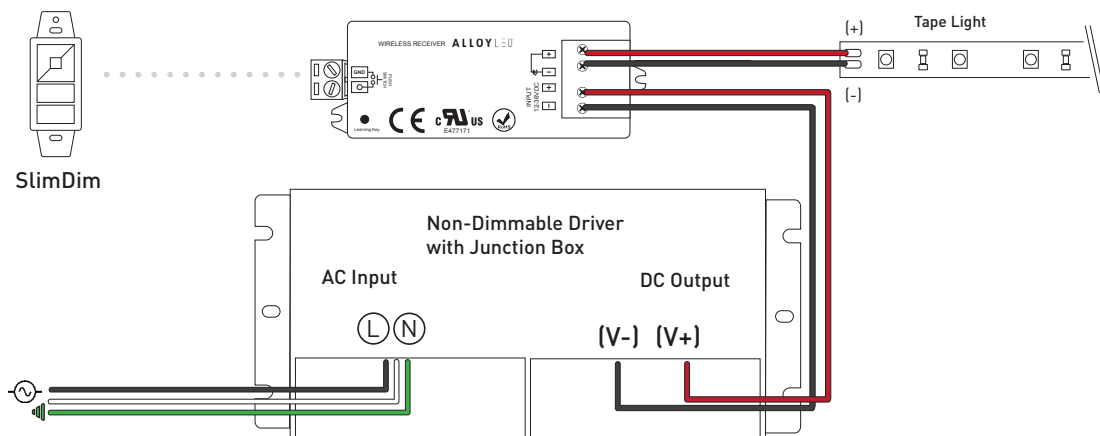
Single Channel Wireless Receiver

Pair with the Remote Control Dimmer Switch or the SlimDim Wireless Dimmer to dim PrimaLine tape lights. Use one remote to make independent lighting zones with multiple receivers with certain controllers.

AL-70-01-0002	Single Channel Wireless Receiver
---------------	----------------------------------

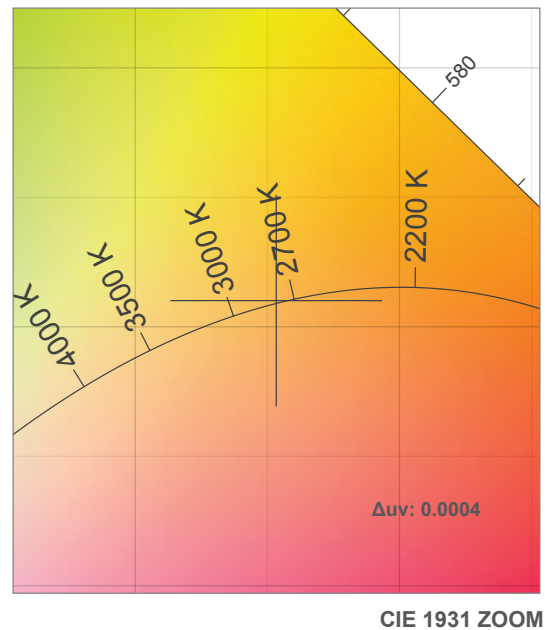
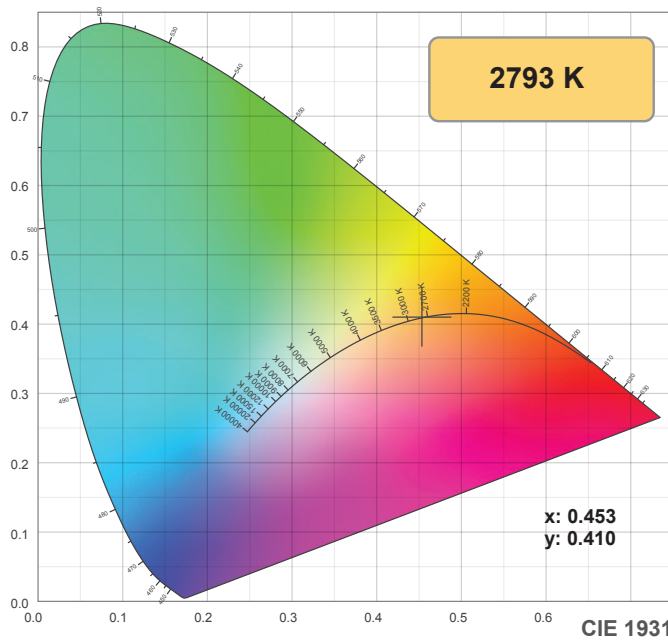


WIRING DIAGRAM

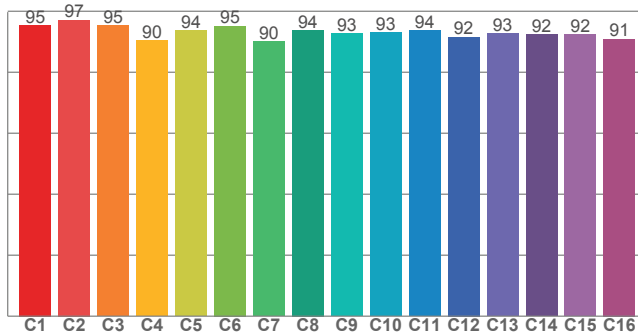


Note: specifications are representative of the diode type and not a particular tape light article.

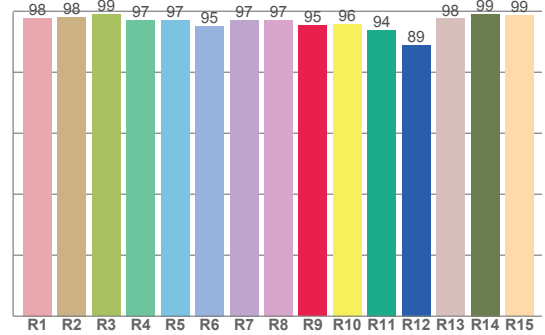
2700K



TM30: 93.3



CRI: 97.3 (R1-R8)



CRI R values, only R1-R8 are used to calculate final CRI value

R1	R2	R3	R4	R5	R6	R7	R8	R9	R10	R11	R12	R13	R14	R15
97.8	98.1	99.0	97.2	97.2	95.1	97.1	97.2	95.4	95.8	93.9	88.9	97.6	99.1	98.6

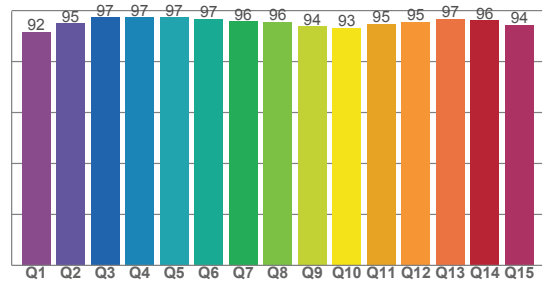
TM30 C values, 16 binned values out of total of 99 C values

C1	C2	C3	C4	C5	C6	C7	C8	C9	C10	C11	C12	C13	C14	C15	C16
95.5	97.2	95.4	90.3	93.6	95.2	90.1	93.8	92.7	93.1	93.6	91.6	92.7	92.4	92.3	91.0

CQS Q values

Q1	Q2	Q3	Q4	Q5	Q6	Q7	Q8	Q9	Q10	Q11	Q12	Q13	Q14	Q15
91.7	94.9	97.3	97.3	97.3	96.6	95.7	95.5	93.9	93.2	94.8	95.5	96.8	96.2	94.3

CQS: 94.9



Color parameters

Color temperature	Color rendering index	Red component	Color fidelity	Color gamut	Color quality scale	Color coordinate cie 1931	Color coordinate cie 1931	Color coordinate	Color coordinate	Color deviation from black body
CCT	CRI	CRI R9	TM30 Rf	TM30 Rg	CQS	x	y	u	v	Δuv
2793 K	97.3	95.4	93.3	99.1	94.9	0.453	0.410	0.259	0.351	0.0004

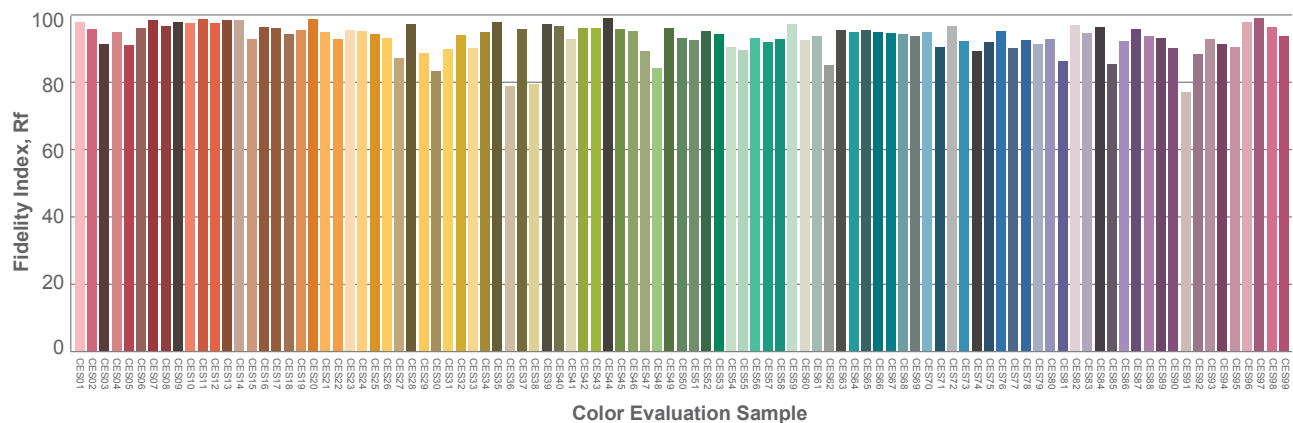
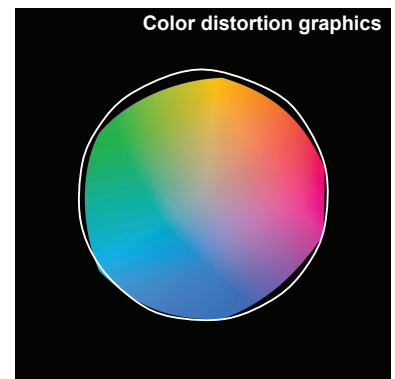
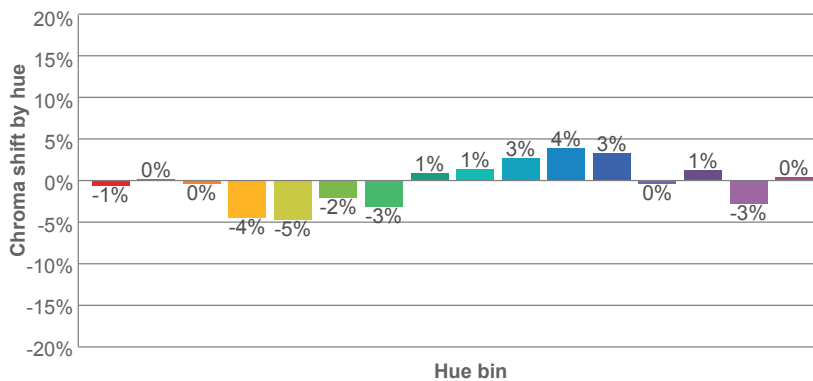
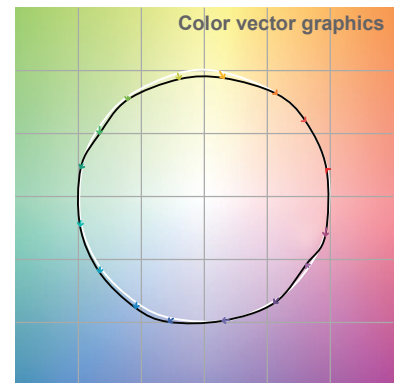
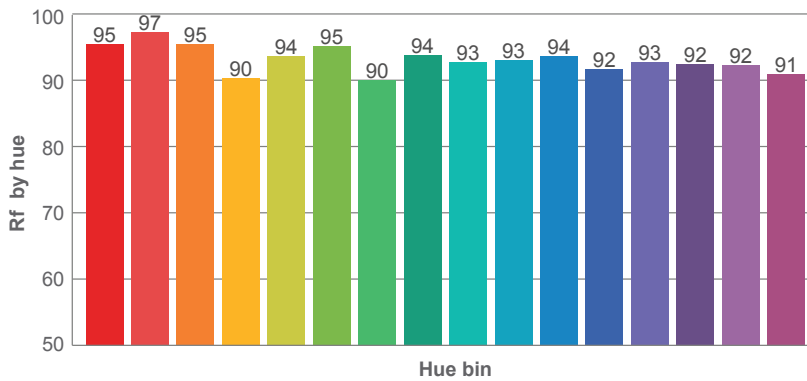
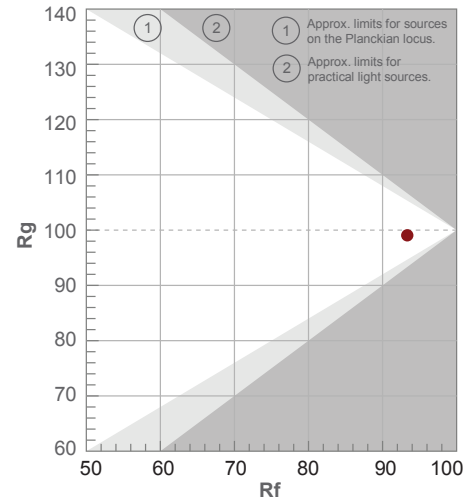
Note: specifications are representative of the diode type and not a particular tape light article.

2700K

Rf 93.3
Fidelity index Rf

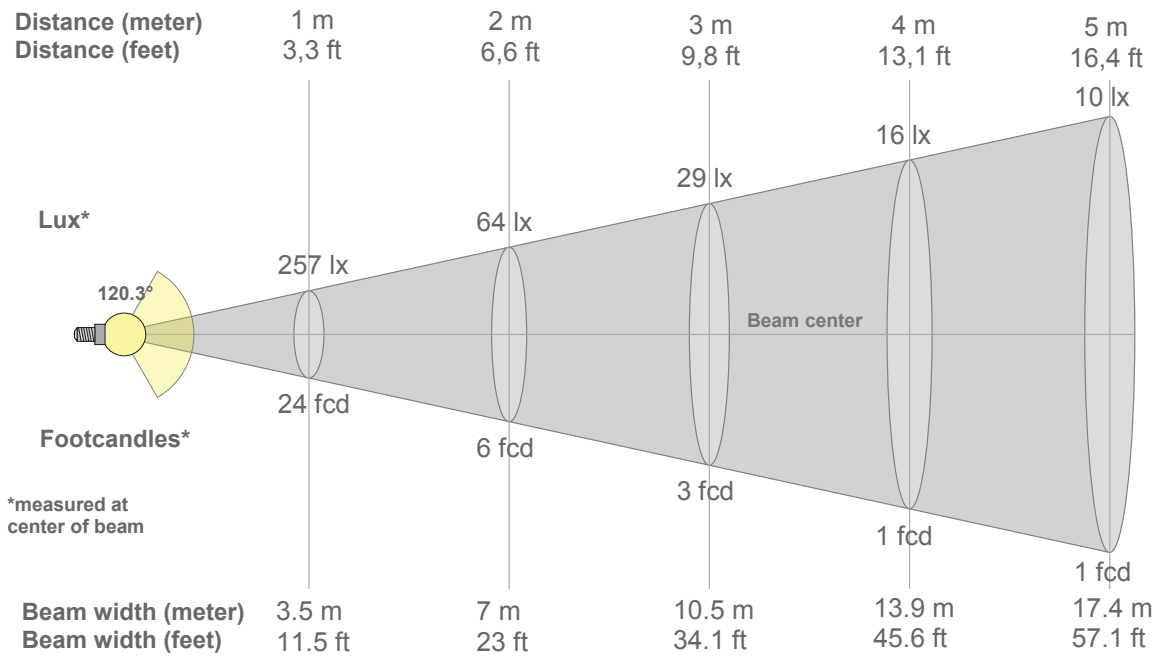
Rg 99.1
Gammut index Rg

Hue Bin	R _f	Graphic shifts (%)	
		Chroma	Hue
1	95	-1%	1%
2	97	0%	-1%
3	95	0%	-2%
4	90	-4%	-4%
5	94	-5%	-1%
6	95	-2%	2%
7	90	-3%	5%
8	94	1%	4%
9	93	1%	4%
10	93	3%	3%
11	94	4%	2%
12	92	3%	-3%
13	93	0%	-5%
14	92	1%	-5%
15	92	-3%	1%
16	91	0%	-6%



Note: specifications are representative of the diode type and not a particular tape light article.

2700K



Beam intensities from 1-20m

1m	2m	3m	4m	5m	6m	7m	8m	9m	10m	11m	12m	13m	14m	15m	16m	17m	18m	19m	20m
3.3ft	6.6ft	9.8ft	13.1ft	16.4ft	19.7ft	23ft	26.2ft	29.5ft	32.8ft	36.1ft	39.4ft	42.7ft	45.9ft	49.2ft	52.5ft	55.8ft	59.1ft	62.3ft	65.6ft
257lx	64lx	29lx	16lx	10lx	7lx	5lx	4lx	3lx	3lx	2lx	2lx	2lx	1lx	1lx	1lx	1lx	1lx	1lx	1lx
23.9fcd	6fcd	2.7fcd	1.5fcd	1fcd	0.7fcd	0.5fcd	0.4fcd	0.3fcd	0.2fcd	0.2fcd	0.2fcd	0.1fcd	0.1fcd	0.1fcd	0.1fcd	0.1fcd	0.1fcd	0.1fcd	0.1fcd

Intensities in 0° c-plane

0°	5°	10°	15°	20°	25°	30°	35°	40°	45°	50°	55°	60°	65°	70°	75°	80°	85°	90°	95°
257	256	253	248	241	233	223	211	198	183	166	148	129	109	87	65	43	23	10	2
100%	100%	98%	97%	94%	91%	87%	82%	77%	71%	65%	58%	50%	42%	34%	25%	17%	9%	4%	1%

Intensities in 90° c-plane

0°	5°	10°	15°	20°	25°	30°	35°	40°	45°	50°	55°	60°	65°	70°	75°	80°	85°	90°	95°
257	256	253	248	241	233	223	211	198	183	166	148	129	109	87	65	43	23	10	2
100%	100%	98%	97%	94%	91%	87%	82%	77%	71%	65%	58%	50%	42%	34%	25%	17%	9%	4%	1%

Intensities in 180° c-plane

0°	5°	10°	15°	20°	25°	30°	35°	40°	45°	50°	55°	60°	65°	70°	75°	80°	85°	90°	95°
257	256	254	249	242	234	224	212	199	183	167	149	129	108	86	64	41	21	8	1
100%	100%	99%	97%	94%	91%	87%	83%	77%	71%	65%	58%	50%	42%	34%	25%	16%	8%	3%	0%

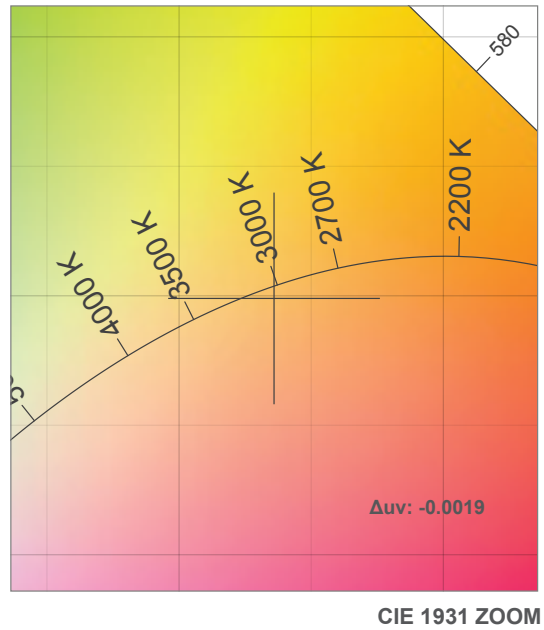
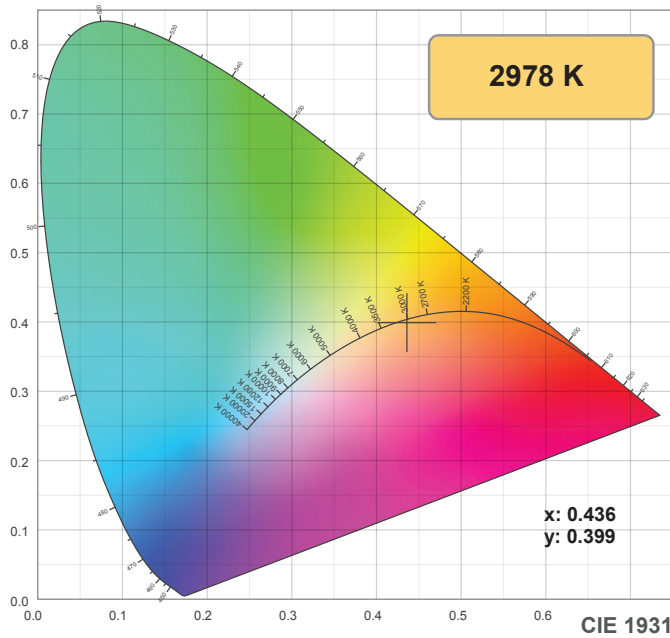
Intensities in 270° c-plane

0°	5°	10°	15°	20°	25°	30°	35°	40°	45°	50°	55°	60°	65°	70°	75°	80°	85°	90°	95°
257	256	254	249	242	234	224	212	199	183	167	149	129	108	86	64	41	21	8	1
100%	100%	99%	97%	94%	91%	87%	83%	77%	71%	65%	58%	50%	42%	34%	25%	16%	8%	3%	0%

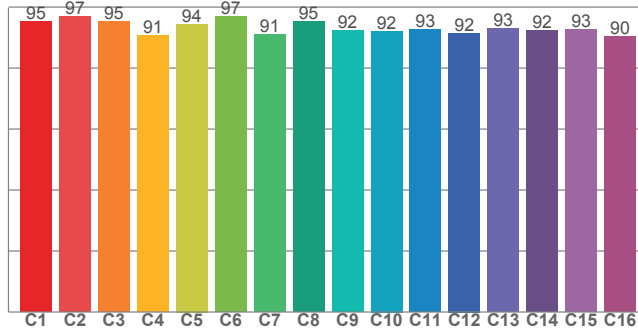
Beam angle 50%	Field angle 10%	Cutoff angle 2,5%	Intensity ratio in 120° cone	Intensity ratio in 90° cone
120.3°	168°	182.4°	74.4%	49.5%

Note: specifications are representative of the diode type and not a particular tape light article.

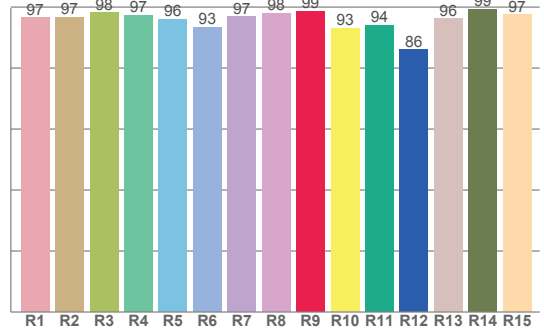
3000K



TM30: 93.4



CRI: 96.6 (R1-R8)



CRI R values, only R1-R8 are used to calculate final CRI value

R1	R2	R3	R4	R5	R6	R7	R8	R9	R10	R11	R12	R13	R14	R15
96.5	96.7	98.1	97.3	95.9	93.5	96.8	97.9	98.5	93.0	94.1	86.0	96.1	99.2	97.5

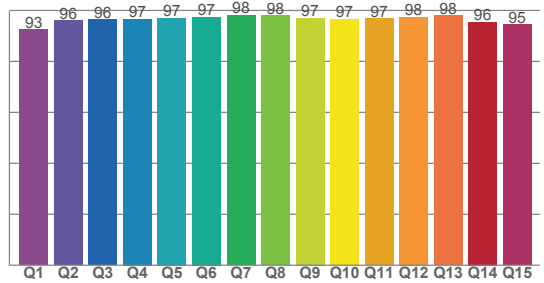
TM30 C values, 16 binned values out of total of 99 C values

C1	C2	C3	C4	C5	C6	C7	C8	C9	C10	C11	C12	C13	C14	C15	C16
95.4	96.9	95.4	90.8	94.5	96.9	91.0	95.2	92.3	92.2	92.5	91.5	92.9	92.3	92.6	90.4

CQS Q values

Q1	Q2	Q3	Q4	Q5	Q6	Q7	Q8	Q9	Q10	Q11	Q12	Q13	Q14	Q15
92.6	96.0	96.4	96.6	97.0	97.4	98.1	97.9	97.0	96.7	96.8	97.5	97.9	95.5	94.6

CQS: 96.1



Color parameters

Color temperature	Color rendering index	Red component	Color fidelity	Color gamut	Color quality scale	Color coordinate cie 1931	Color coordinate cie 1931	Color coordinate	Color coordinate	Color deviation from black body
CCT	CRI	CRI R9	TM30 Rf	TM30 Rg	CQS	x	y	u	v	Δuv
2978 K	96.6	98.5	93.4	100.1	96.1	0.436	0.399	0.252	0.346	-0.0019

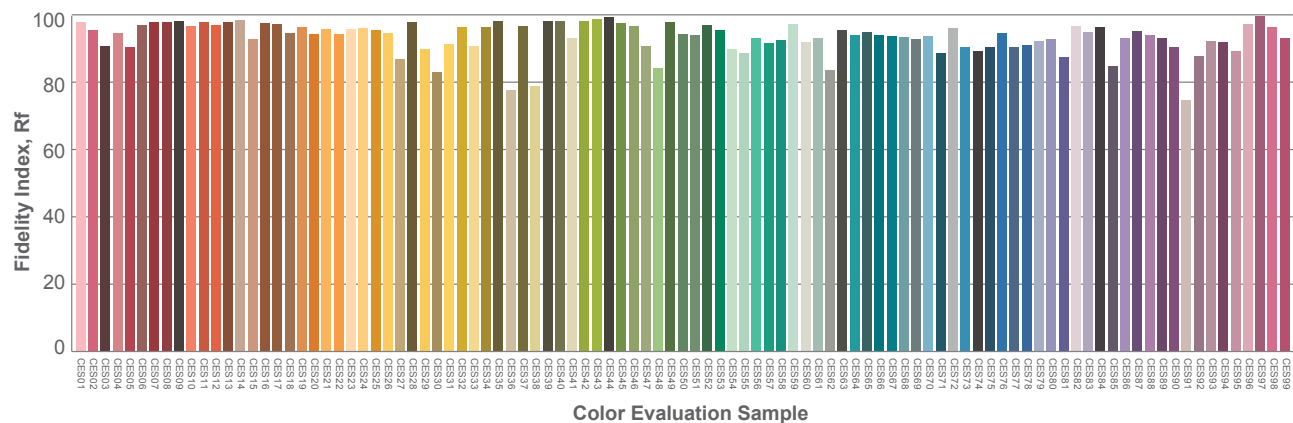
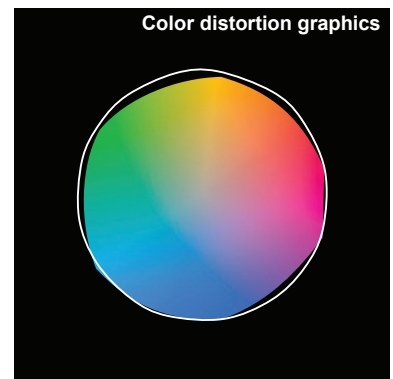
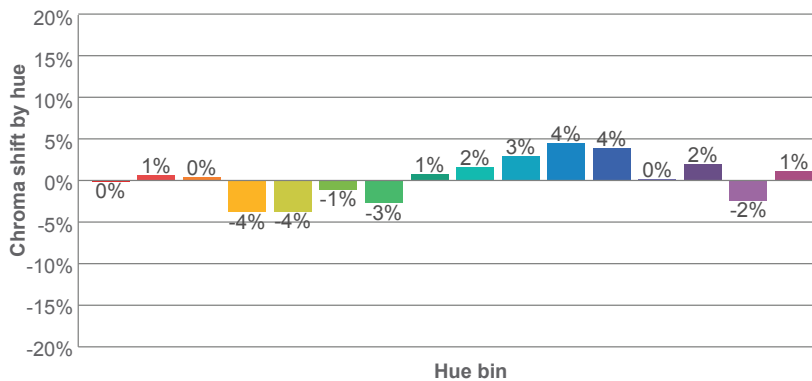
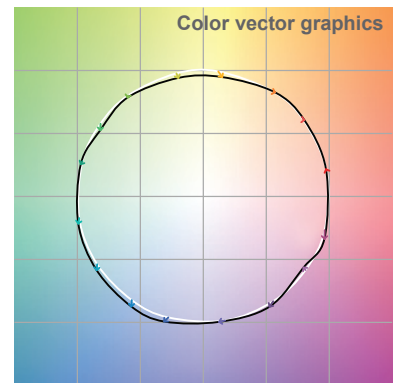
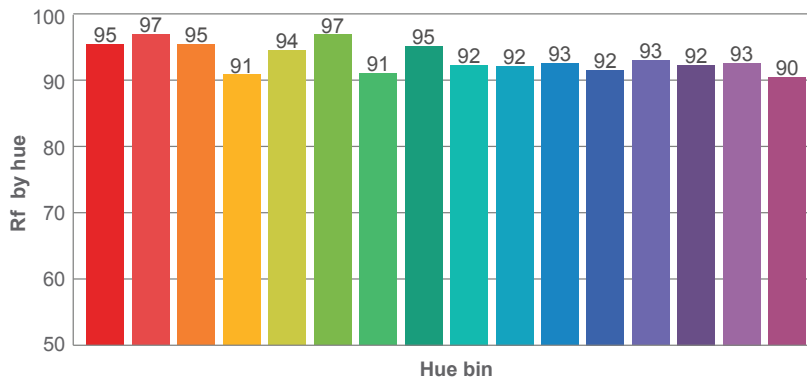
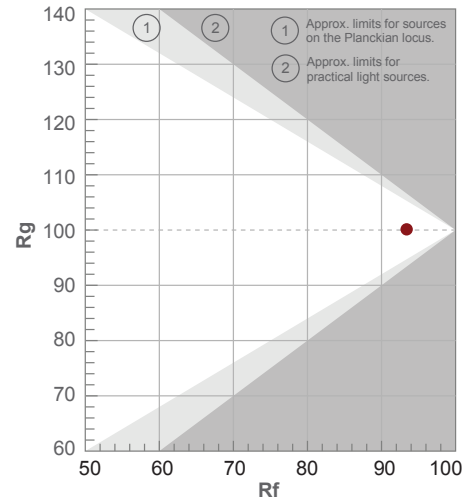
Note: specifications are representative of the diode type and not a particular tape light article.

3000K

Rf 93.4
Fidelity index Rf

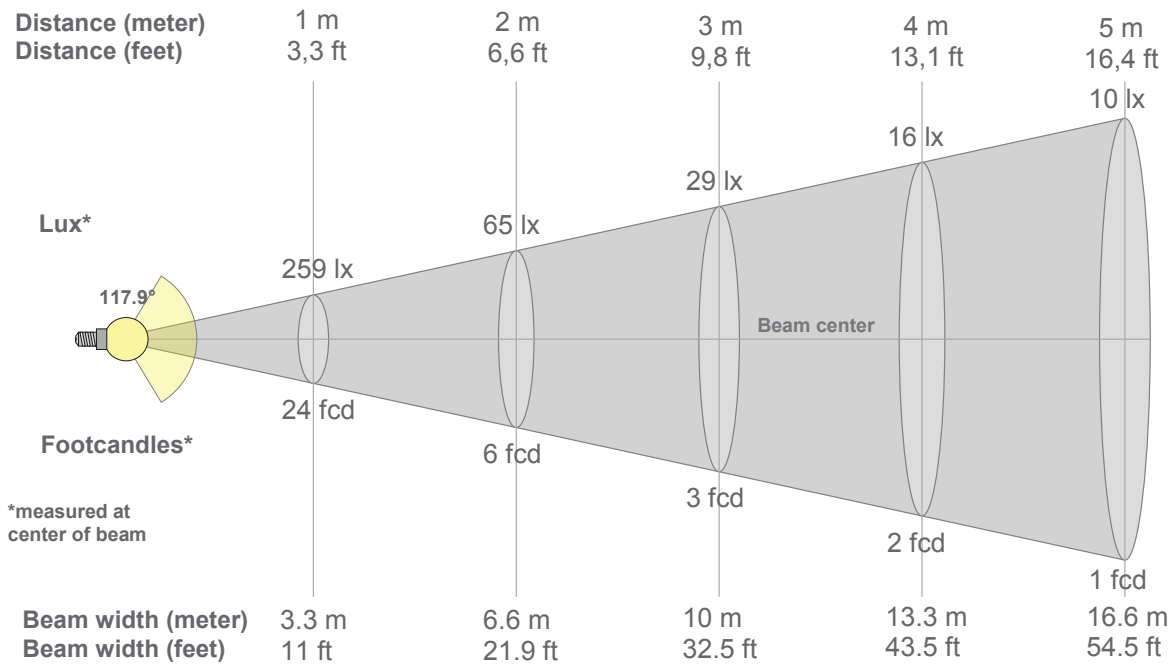
Rg 100.1
Gammut index Rg

Hue Bin	R _f	Graphic shifts (%)	
		Chroma	Hue
1	95	0%	1%
2	97	1%	-1%
3	95	0%	-1%
4	91	-4%	-4%
5	94	-4%	-1%
6	97	-1%	1%
7	91	-3%	4%
8	95	1%	3%
9	92	2%	4%
10	92	3%	4%
11	93	4%	3%
12	92	4%	-3%
13	93	0%	-5%
14	92	2%	-5%
15	93	-2%	1%
16	90	1%	-7%



Note: specifications are representative of the diode type and not a particular tape light article.

3000K



Beam intensities from 1-20m

1m	2m	3m	4m	5m	6m	7m	8m	9m	10m	11m	12m	13m	14m	15m	16m	17m	18m	19m	20m
3.3ft	6.6ft	9.8ft	13.1ft	16.4ft	19.7ft	23ft	26.2ft	29.5ft	32.8ft	36.1ft	39.4ft	42.7ft	45.9ft	49.2ft	52.5ft	55.8ft	59.1ft	62.3ft	65.6ft
259lx	65lx	29lx	16lx	10lx	7lx	5lx	4lx	3lx	3lx	2lx	2lx	2lx	1lx	1lx	1lx	1lx	1lx	1lx	1lx
24fcd	6fcd	2.7fcd	1.5fcd	1fcd	0.7fcd	0.5fcd	0.4fcd	0.3fcd	0.2fcd	0.2fcd	0.2fcd	0.2fcd	0.1fcd	0.1fcd	0.1fcd	0.1fcd	0.1fcd	0.1fcd	0.1fcd

Intensities in 0° c-plane

0°	5°	10°	15°	20°	25°	30°	35°	40°	45°	50°	55°	60°	65°	70°	75°	80°	85°	90°	95°
259	258	255	250	244	235	224	212	197	181	164	145	125	105	84	63	42	24	10	2
100%	100%	99%	97%	94%	91%	87%	82%	76%	70%	63%	56%	48%	41%	32%	24%	16%	9%	4%	1%

Intensities in 90° c-plane

0°	5°	10°	15°	20°	25°	30°	35°	40°	45°	50°	55°	60°	65°	70°	75°	80°	85°	90°	95°
259	258	255	250	244	235	224	212	197	181	164	145	125	105	84	63	42	24	10	2
100%	100%	99%	97%	94%	91%	87%	82%	76%	70%	63%	56%	48%	41%	32%	24%	16%	9%	4%	1%

Intensities in 180° c-plane

0°	5°	10°	15°	20°	25°	30°	35°	40°	45°	50°	55°	60°	65°	70°	75°	80°	85°	90°	95°
259	258	255	250	243	235	224	212	198	182	165	146	125	104	81	59	38	18	7	1
100%	100%	98%	96%	94%	91%	86%	82%	76%	70%	64%	56%	48%	40%	31%	23%	15%	7%	3%	0%

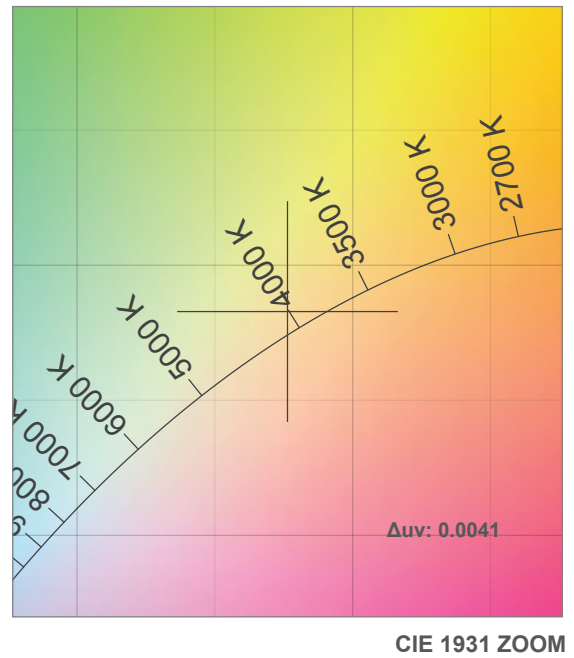
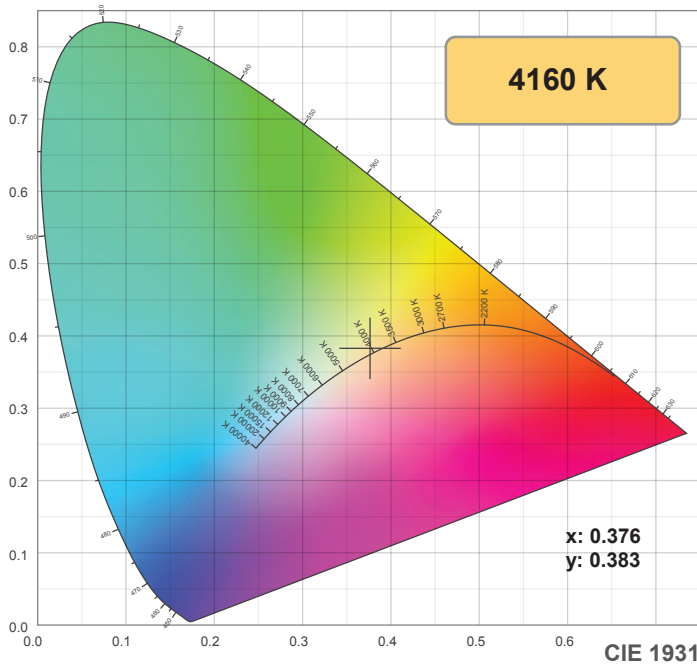
Intensities in 270° c-plane

0°	5°	10°	15°	20°	25°	30°	35°	40°	45°	50°	55°	60°	65°	70°	75°	80°	85°	90°	95°
259	258	255	250	243	235	224	212	198	182	165	146	125	104	81	59	38	18	7	1
100%	100%	98%	96%	94%	91%	86%	82%	76%	70%	64%	56%	48%	40%	31%	23%	15%	7%	3%	0%

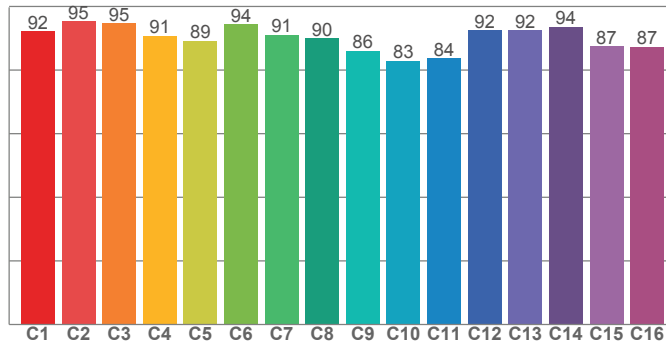
Beam angle 50%	Field angle 10%	Cutoff angle 2,5%	Intensity ratio in 120° cone	Intensity ratio in 90° cone
117.9°	167.4°	182.3°	74.9%	50.2%

Note: specifications are representative of the diode type and not a particular tape light article.

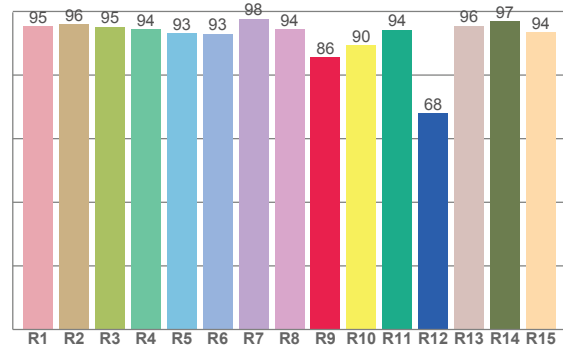
4200K



TM30: 89.9



CRI: 95.0 (R1-R8)



CRI R values, only R1-R8 are used to calculate final CRI value

R1	R2	R3	R4	R5	R6	R7	R8	R9	R10	R11	R12	R13	R14	R15
95.5	96.1	95.2	94.3	93.2	93.1	97.7	94.5	85.7	89.5	94.3	68.1	95.5	96.9	93.5

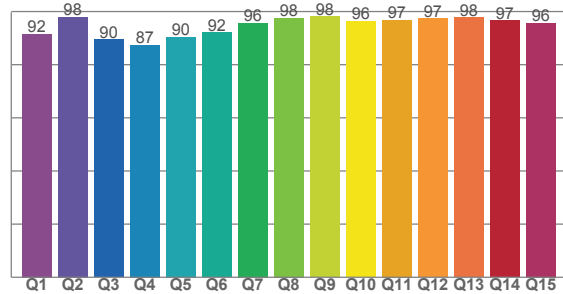
TM30 C values, 16 binned values out of total of 99 C values

C1	C2	C3	C4	C5	C6	C7	C8	C9	C10	C11	C12	C13	C14	C15	C16
92.1	95.4	94.7	90.8	89.3	94.4	91.2	90.1	86.1	83.0	83.7	92.5	92.5	93.5	87.4	87.3

CQS Q values

Q1	Q2	Q3	Q4	Q5	Q6	Q7	Q8	Q9	Q10	Q11	Q12	Q13	Q14	Q15
91.6	98.0	89.5	87.4	90.5	92.0	95.6	97.7	98.0	96.3	96.9	97.3	97.8	96.7	95.7

CQS: 93.7



Color parameters

Color temperature	Color rendering index	Red component	Color fidelity	Color gamut	Color quality scale	Color coordinate cie 1931	Color coordinate cie 1931	Color coordinate	Color coordinate	Color deviation from black body
CCT	CRI	CRI R9	TM30 Rf	TM30 Rg	CQS	x	y	u	v	Δuv
4160 K	95.0	85.7	89.9	97.6	93.7	0.376	0.383	0.220	0.336	0.0041

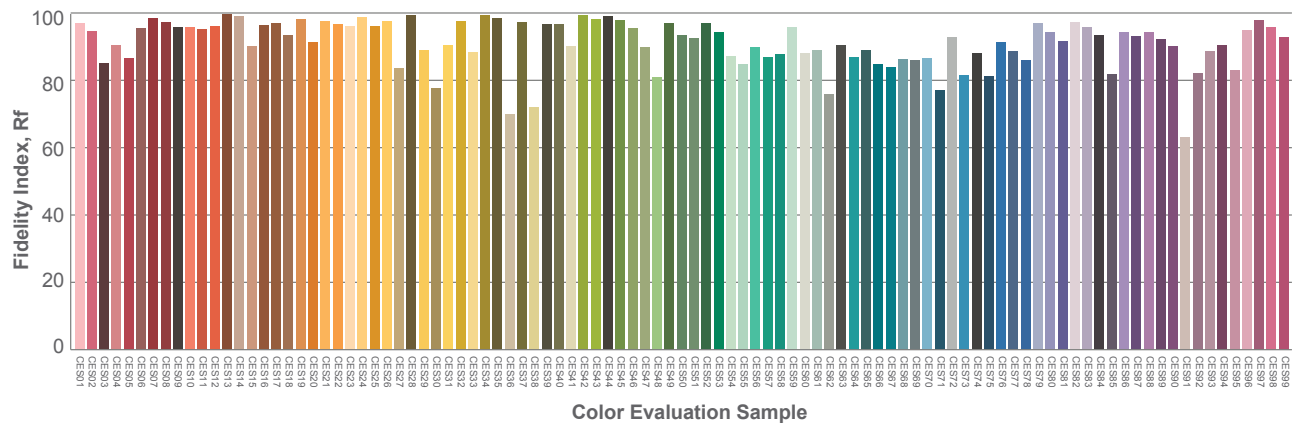
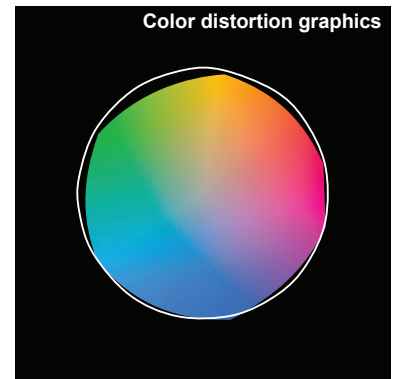
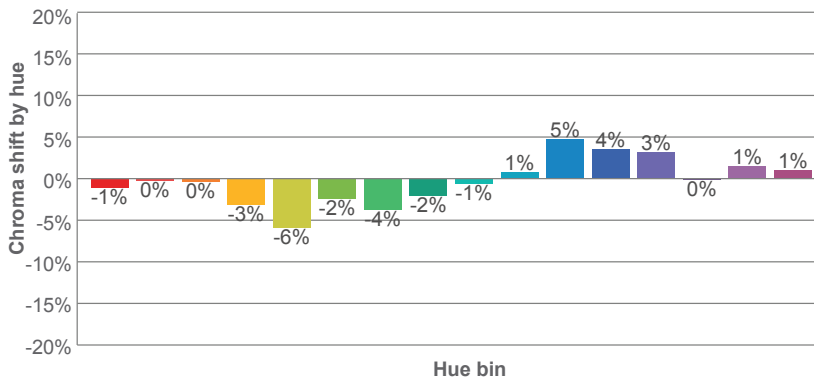
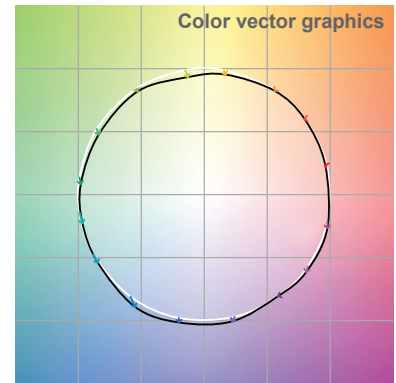
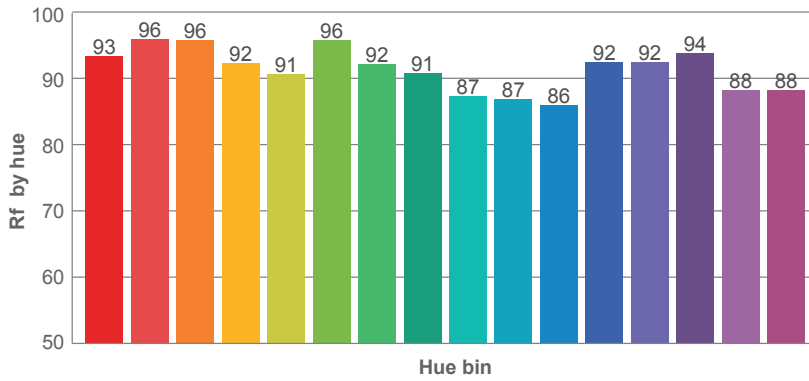
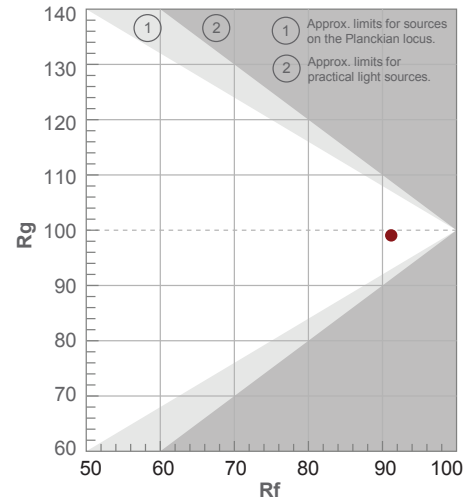
Note: specifications are representative of the diode type and not a particular tape light article.

4200K

Rf 91.2
Fidelity index Rf

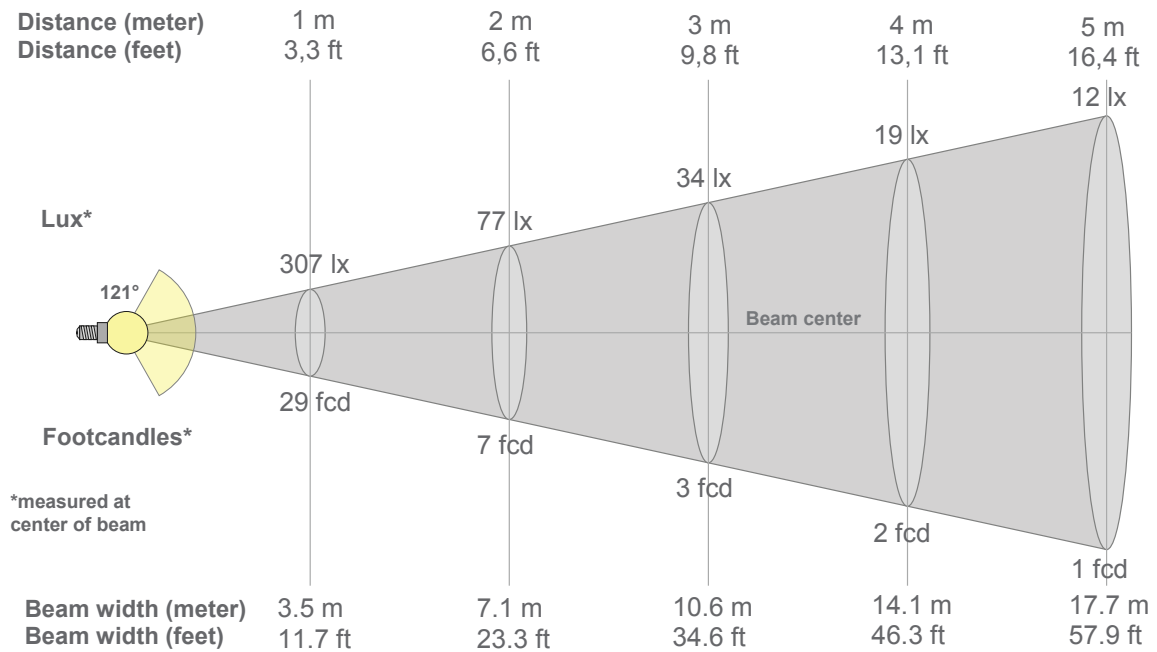
Rg 99.1
Gammut index Rg

Hue Bin	R _f	Graphic shifts (%)	
		Chroma	Hue
1	93	-1%	1%
2	96	0%	0%
3	96	0%	0%
4	92	-3%	-2%
5	91	-6%	-1%
6	96	-2%	0%
7	92	-4%	3%
8	91	-2%	5%
9	87	-1%	9%
10	87	1%	7%
11	86	5%	7%
12	92	4%	1%
13	92	3%	-3%
14	94	0%	-1%
15	88	1%	-4%
16	88	1%	-5%



Note: specifications are representative of the diode type and not a particular tape light article.

4200K



Beam intensities from 1-20m

1m	2m	3m	4m	5m	6m	7m	8m	9m	10m	11m	12m	13m	14m	15m	16m	17m	18m	19m	20m
3.3ft	6.6ft	9.8ft	13.1ft	16.4ft	19.7ft	23ft	26.2ft	29.5ft	32.8ft	36.1ft	39.4ft	42.7ft	45.9ft	49.2ft	52.5ft	55.8ft	59.1ft	62.3ft	65.6ft
307lx	77lx	34lx	19lx	12lx	9lx	6lx	5lx	4lx	3lx	3lx	2lx	2lx	2lx	1lx	1lx	1lx	1lx	1lx	1lx
28.5fcd	7.1fcd	3.2fcd	1.8fcd	1.1fcd	0.8fcd	0.6fcd	0.4fcd	0.4fcd	0.3fcd	0.2fcd	0.2fcd	0.2fcd	0.1fcd	0.1fcd	0.1fcd	0.1fcd	0.1fcd	0.1fcd	0.1fcd

Intensities in 0° c-plane

0°	5°	10°	15°	20°	25°	30°	35°	40°	45°	50°	55°	60°	65°	70°	75°	80°	85°	90°	95°
307	306	303	297	290	280	268	255	239	221	201	180	156	131	104	78	52	27	12	2
100%	100%	99%	97%	94%	91%	87%	83%	78%	72%	66%	59%	51%	43%	34%	25%	17%	9%	4%	1%

Intensities in 90° c-plane

0°	5°	10°	15°	20°	25°	30°	35°	40°	45°	50°	55°	60°	65°	70°	75°	80°	85°	90°	95°
307	306	303	297	290	280	268	255	239	221	201	180	156	131	104	78	52	27	12	2
100%	100%	99%	97%	94%	91%	87%	83%	78%	72%	66%	59%	51%	43%	34%	25%	17%	9%	4%	1%

Intensities in 180° c-plane

0°	5°	10°	15°	20°	25°	30°	35°	40°	45°	50°	55°	60°	65°	70°	75°	80°	85°	90°	95°
307	306	303	298	291	281	269	257	240	222	202	180	156	131	103	75	48	24	9	1
100%	100%	99%	97%	95%	92%	88%	84%	78%	72%	66%	59%	51%	43%	34%	24%	16%	8%	3%	0%

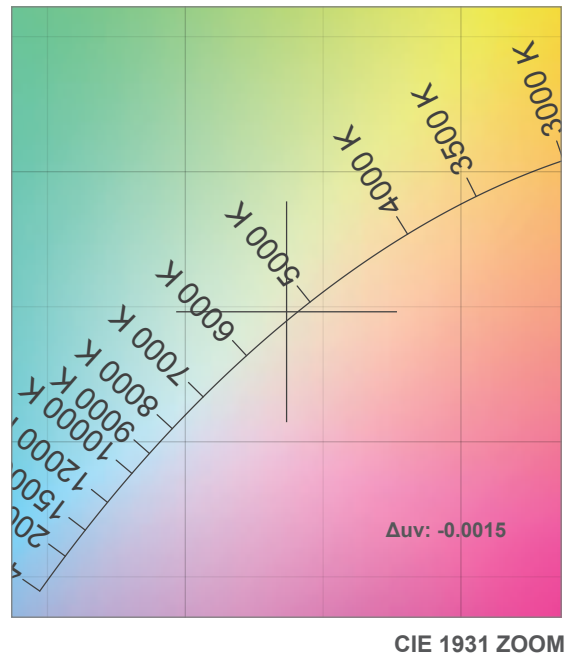
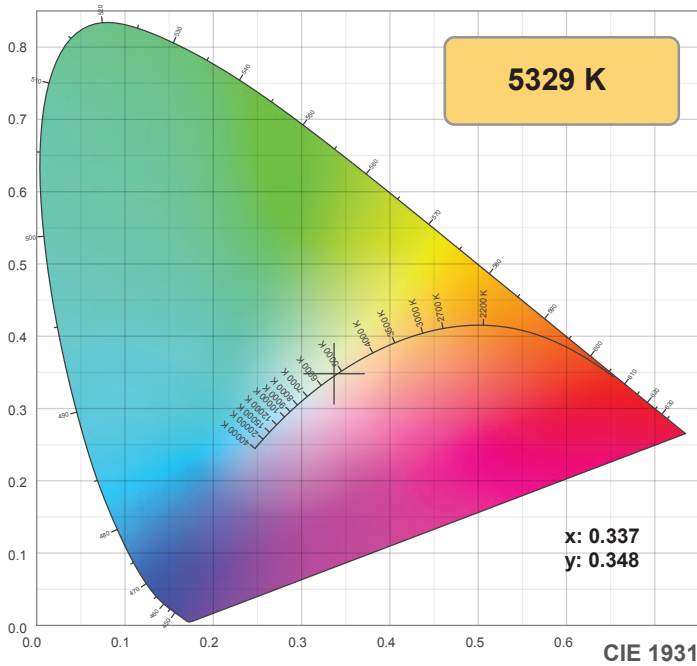
Intensities in 270° c-plane

0°	5°	10°	15°	20°	25°	30°	35°	40°	45°	50°	55°	60°	65°	70°	75°	80°	85°	90°	95°
307	306	303	298	291	281	269	257	240	222	202	180	156	131	103	75	48	24	9	1
100%	100%	99%	97%	95%	92%	88%	84%	78%	72%	66%	59%	51%	43%	34%	24%	16%	8%	3%	0%

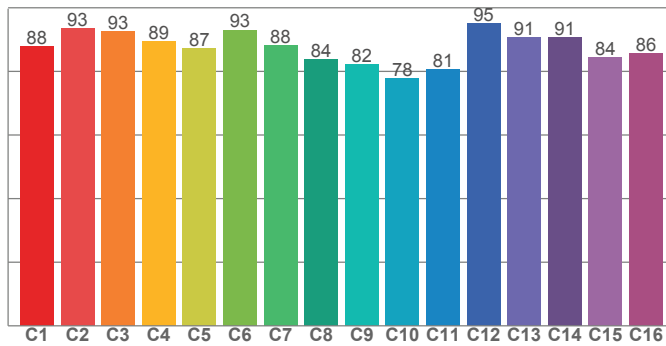
Beam angle 50%	Field angle 10%	Cutoff angle 2,5%	Intensity ratio in 120° cone	Intensity ratio in 90° cone
121°	167.8°	182.2°	74.6%	49.6%

Note: specifications are representative of the diode type and not a particular tape light article.

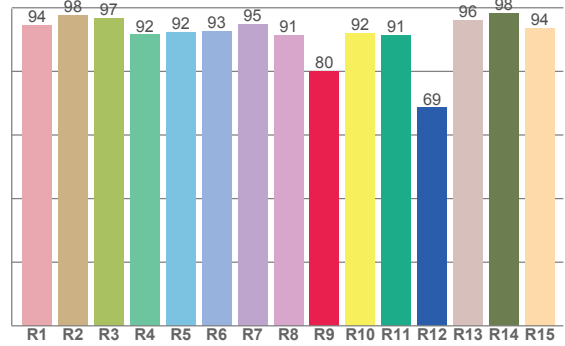
5000K



TM30: 87.4



CRI: 93.9 (R1-R8)



CRI R values, only R1-R8 are used to calculate final CRI value

R1	R2	R3	R4	R5	R6	R7	R8	R9	R10	R11	R12	R13	R14	R15
94.4	97.6	96.7	91.5	92.3	92.6	94.9	91.2	80.1	92.1	91.5	68.6	96.1	98.3	93.5

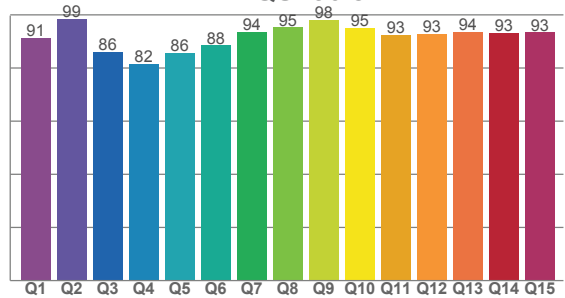
TM30 C values, 16 binned values out of total of 99 C values

C1	C2	C3	C4	C5	C6	C7	C8	C9	C10	C11	C12	C13	C14	C15	C16
87.9	93.5	92.5	89.3	87.3	93.0	88.1	83.8	82.3	77.8	80.6	95.1	90.8	90.7	84.4	85.7

CQS Q values

Q1	Q2	Q3	Q4	Q5	Q6	Q7	Q8	Q9	Q10	Q11	Q12	Q13	Q14	Q15
91.4	98.6	86.0	81.6	85.7	88.5	93.5	95.3	98.0	95.0	92.5	92.8	93.6	93.3	93.4

CQS: 90.8



Color parameters

Color temperature	Color rendering index	Red component	Color fidelity	Color gamut	Color quality scale	Color coordinate cie 1931	Color coordinate cie 1931	Color coordinate	Color coordinate	Color deviation from black body
CCT	CRI	CRI R9	TM30 Rf	TM30 Rg	CQS	x	y	u	v	Δuv
5329 K	93.9	80.1	87.4	96.4	90.8	0.337	0.348	0.207	0.321	-0.0015

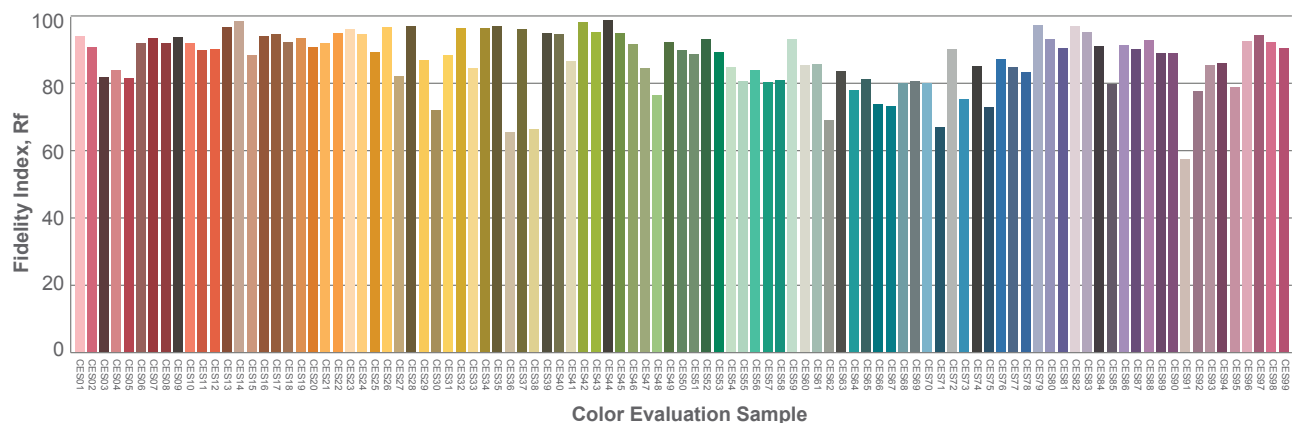
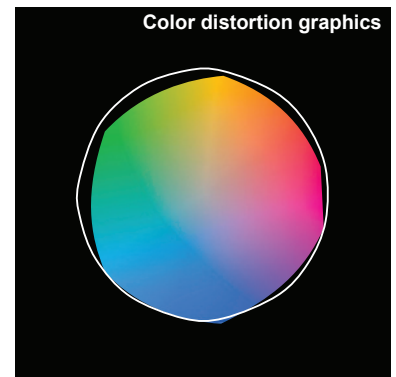
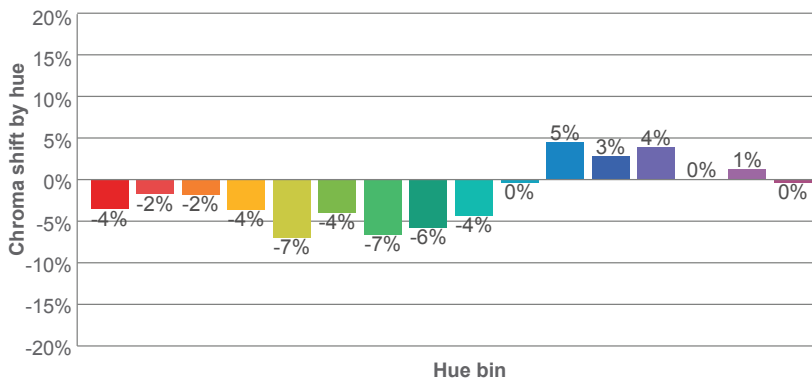
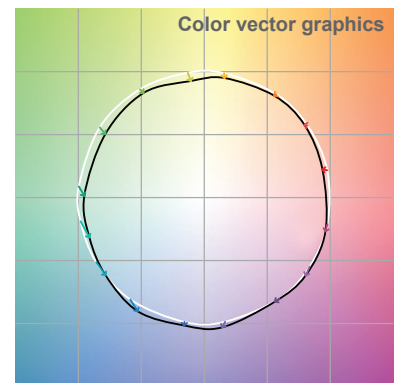
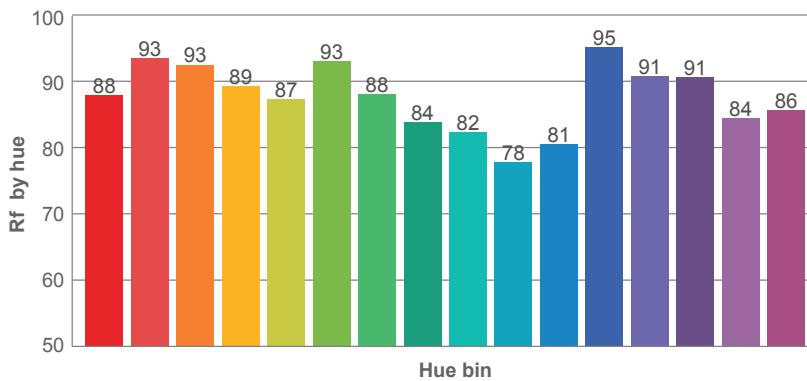
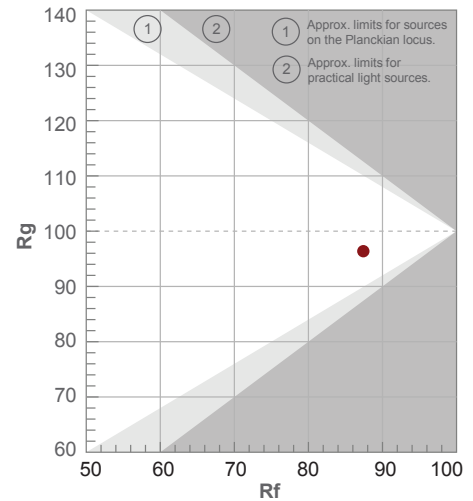
Note: specifications are representative of the diode type and not a particular tape light article.

4200K

Rf 87.4
Fidelity index Rf

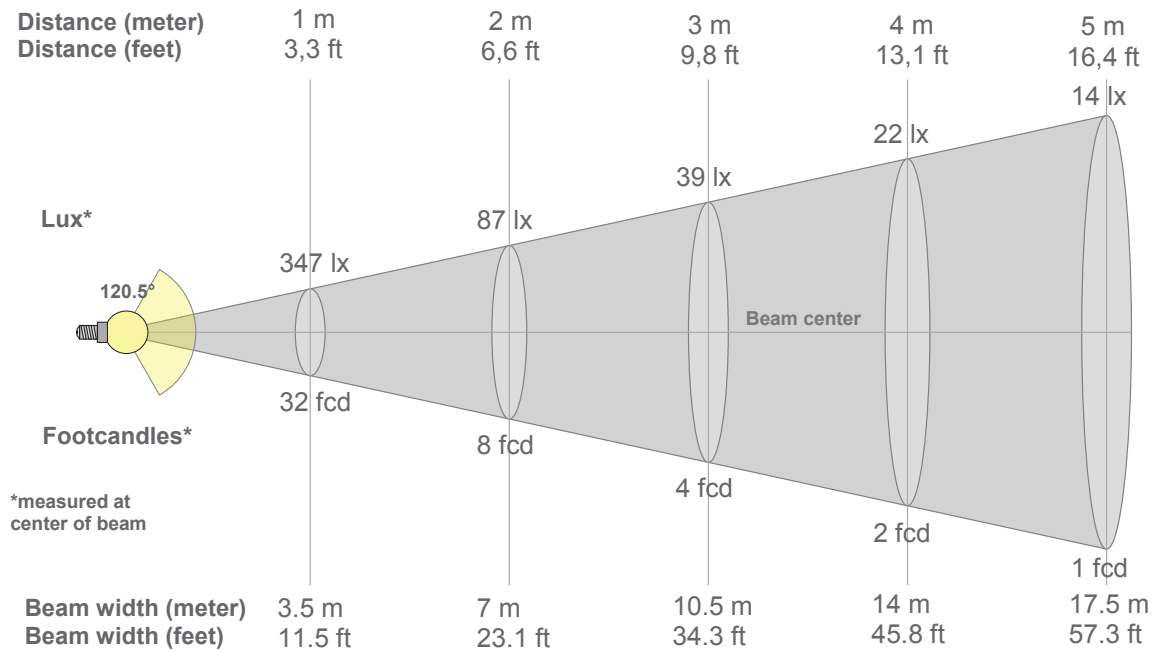
Rg 96.4
Gammut index Rg

Hue Bin	R _f	Graphic shifts (%)	
		Chroma	Hue
1	88	-4%	1%
2	93	-2%	2%
3	93	-2%	1%
4	89	-4%	-1%
5	87	-7%	-1%
6	93	-4%	-1%
7	88	-7%	2%
8	84	-6%	6%
9	82	-4%	14%
10	78	0%	13%
11	81	5%	10%
12	95	3%	0%
13	91	4%	-3%
14	91	0%	-4%
15	84	1%	-8%
16	86	0%	-6%



Note: specifications are representative of the diode type and not a particular tape light article.

5000K



Beam intensities from 1-20m

1m	2m	3m	4m	5m	6m	7m	8m	9m	10m	11m	12m	13m	14m	15m	16m	17m	18m	19m	20m
3.3ft	6.6ft	9.8ft	13.1ft	16.4ft	19.7ft	23ft	26.2ft	29.5ft	32.8ft	36.1ft	39.4ft	42.7ft	45.9ft	49.2ft	52.5ft	55.8ft	59.1ft	62.3ft	65.6ft
347lx	87lx	39lx	22lx	14lx	10lx	7lx	5lx	4lx	3lx	3lx	2lx	2lx	2lx	2lx	1lx	1lx	1lx	1lx	1lx
32.2fcd	8.1fcd	3.6fcd	2fcd	1.3fcd	0.9fcd	0.7fcd	0.5fcd	0.4fcd	0.3fcd	0.3fcd	0.2fcd	0.2fcd	0.2fcd	0.1fcd	0.1fcd	0.1fcd	0.1fcd	0.1fcd	0.1fcd

Intensities in 0° c-plane

0°	5°	10°	15°	20°	25°	30°	35°	40°	45°	50°	55°	60°	65°	70°	75°	80°	85°	90°	95°
347	345	342	335	327	316	303	287	269	248	226	201	175	147	118	88	59	33	11	2
100%	100%	99%	97%	94%	91%	87%	83%	77%	72%	65%	58%	50%	42%	34%	26%	17%	9%	3%	1%

Intensities in 90° c-plane

0°	5°	10°	15°	20°	25°	30°	35°	40°	45°	50°	55°	60°	65°	70°	75°	80°	85°	90°	95°
347	345	342	335	327	316	303	287	269	248	226	201	175	147	118	88	59	33	11	2
100%	100%	99%	97%	94%	91%	87%	83%	77%	72%	65%	58%	50%	42%	34%	26%	17%	9%	3%	1%

Intensities in 180° c-plane

0°	5°	10°	15°	20°	25°	30°	35°	40°	45°	50°	55°	60°	65°	70°	75°	80°	85°	90°	95°
347	346	343	338	330	319	306	291	273	252	229	203	175	145	113	80	49	22	4	1
100%	100%	99%	97%	95%	92%	88%	84%	79%	73%	66%	58%	50%	42%	33%	23%	14%	6%	1%	0%

Intensities in 270° c-plane

0°	5°	10°	15°	20°	25°	30°	35°	40°	45°	50°	55°	60°	65°	70°	75°	80°	85°	90°	95°
347	346	343	338	330	319	306	291	273	252	229	203	175	145	113	80	49	22	4	1
100%	100%	99%	97%	95%	92%	88%	84%	79%	73%	66%	58%	50%	42%	33%	23%	14%	6%	1%	0%

Beam angle 50%	Field angle 10%	Cutoff angle 2,5%	Intensity ratio in 120° cone	Intensity ratio in 90° cone
120.5°	167.1°	179°	74.9%	49.9%